

38-46

HANOVER EAST OF WELLINGTON - P.U.D.

IN PART OF SECTION 11, TWP. 44 S., RGE. 41 E.

PALM BEACH COUNTY, FLORIDA

IN 2 SHEETS SHEET NO. 2

Being a Replat of Part of PARCEL "A" and All of PARCEL "B" OF SOUTH SHORE NO. 2 A OF WELLINGTON P.U.D. as recorded in Plat Book 31, Pages 116 through 119, Inclusive, Public Records of Palm Beach County, Florida.

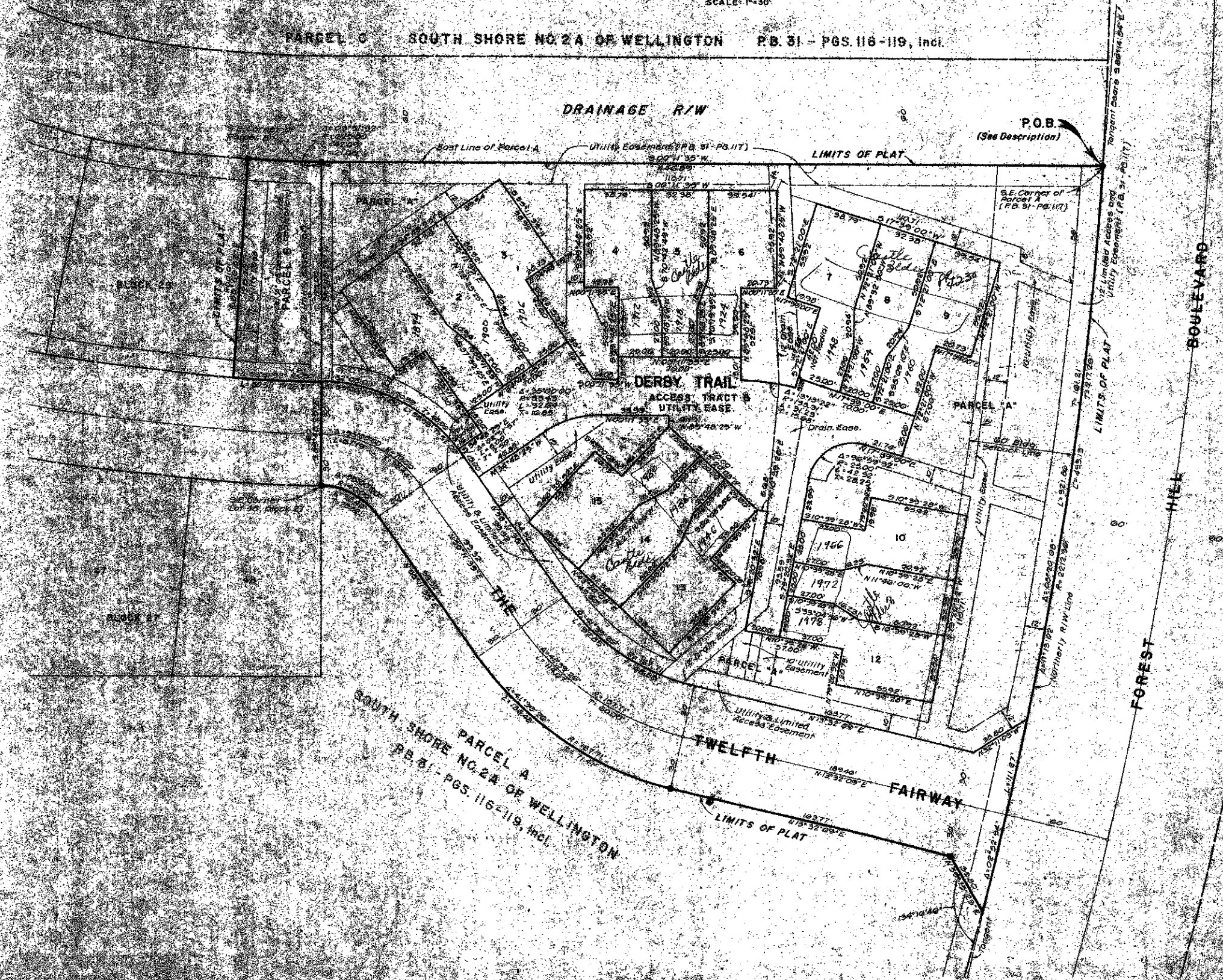
SEE B. JENSON
ENGINEERS-ARCHITECTS-PLANNERS, INC.
WEST PALM BEACH, FLORIDA
JUNE 1979



46

STATE OF FLORIDA
COUNTY OF PALM BEACH
This Plat was filed for record on
this day of
and was received in Plat Book No.
on
JOHN B. DUNKLE, Clerk Circuit Court
P.

PARCEL C SOUTH SHORE NO. 2A OF WELLINGTON P.B. 31 - PGS. 116-119, incl.



FL ZONE B

38/46

NOTES

- Building Setback Lines shall be as required by Palm Beach County Zoning Regulations.
- All bearings shown herein are relative to an assumed meridian used throughout Wellington.
- There shall be no buildings or other structures placed on Utility Easements.
- There shall be no buildings or any kind of construction on parcels or strips placed on Drainage Easements.
- * denotes Permanent Reference Monument.
- * denotes Permanent Control Point.
- Where Utility Easements and Drainage Easements cross or coincide, Drainage Easements shall take precedence.
- Easements are for Public Utilities, unless otherwise noted.

0332-362